



Serving Grays Harbor County

The BEACON

Summer 2021

Summer Loans

Hurray, it's here, it's here! Summer is finally here! How can you make the most of it? Maybe a new RV, a new car or truck? Oh, I know...Maybe a vacation to someplace fun and exciting! No matter how you make your season shine, we may be able to help with one of our Summer Loan Specials! What's the first step? Complete an application, provide recent income verification and a \$10.00 application fee. We'll help you through the process! Ask us for details!



2 Sweet!

Motor on down to take advantage of these sweet vehicle loan rates!

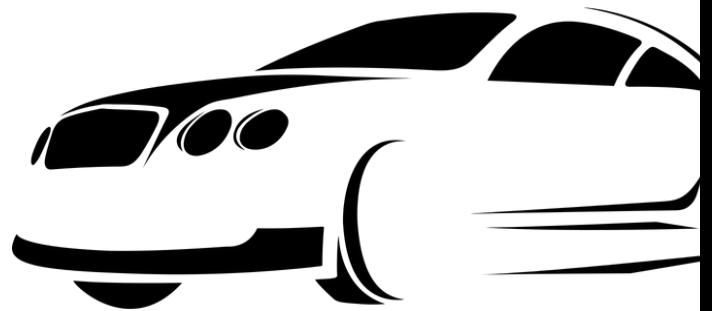
As low as **2.22%** APR

APR=Annual Percentage Rate. Fees and restrictions apply. Loans granted on approved credit. Not all borrowers will qualify for stated rate. Limited time offer.



Looking for ways to make life easier? Using your Debit Mastercard® is easy. No coin to count. One less hoop to hop through. Use it...Debit Debit.

Yum, yum, that's one sweet deal!



WERE YOU SCARED WE WEREN'T HAVING AN ANNUAL MEETING?



Well...We are! Mark your calendar for Saturday, October 16th at the Aberdeen Elks Club #593. The menu isn't yet decided, but wear your favorite costume because we're hosting a Halloween theme evening! Watch for ticket sales as space will be limited.

Quarterly Quote

Enjoy the little things, for one day you may look back and realize they were the big things.

Robert Brault





Well, hello there summer!



Nope, it's not over yet! You haven't missed our RV loan special. Our rates as low as 2.99%^{APR} may help you hit the road sooner than you think.

\$15,000.00
96 months
As low as 2.99%^{APR}
\$176.00 monthly

APR=Annual Percentage Rate. Fees and restrictions apply.
Not all borrowers will qualify for stated rate. Limited time offer.
Loans granted on approved credit.



A mighty engine pulls loaded train cars over the rail bridge across the Wynooche River outside Montesano. Norther Pacific Railroad was the first line to serve Grays Harbor. The first portions were completed in 1892. Today, approximately 28,000 rail cars come through our county.

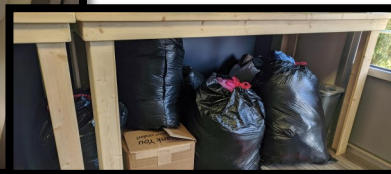
Spread the word! We proudly serve all of Grays Harbor County. Tell your friends and neighbors about our low loans rates and services! We're happy to be here for you. We're happy to be here for them!



Thank you for your donations!

Our *Community Drive* was a big success thanks to you! Coats, blankets, hats, gloves and the like, were delivered to Coastal Community Action program in Aberdeen where

they will be distributed to people in our area who need a helping hand up! Thank you for helping make a difference in our community!



The meaning of life is to find your gift, the purpose of life is to give it away.

Joy J. Golliver

Congratulations class of 2021!

Office Closures

In observance of Independence Day we will be closed, Monday, July 5th

Reminder:

The credit union is closed between 1:00 and 2:00 daily

www.longshorefcu.com / 3107 John Stevens Way Hoquiam, WA 98550
360.532.9224 9:00-1:00 & 2:00-5:30 Monday—Friday

Supervisory Committee PO Box 64 Hoquiam, WA 98550

